

Rotary Poor House Park Business and Management Plan

Created By Fred Birchett

Director Essex County Parks and Recreation

Rotary Poor House Park

General Information

Rotary Poor House Park was created by Resolution in September 2015 by the Essex County Board of Supervisors. The Park is proposed to be an all-inclusive County Park where people can hike, bike, mountain bike, horseback ride, picnic, view historical areas, enjoy multi-use athletic fields, play at a playground, use a dog park, shoot clays, skeet, wobble trap, and play paint ball. The goal of Essex County Parks and Recreation is to provide a setting where people may enjoy multiple options at a single location on any given visit.



Hours

Seasonal Dawn to Dusk 7 day a week

- January, 7:30 am to 5:00 pm
- February, 7:30 am to 5:00 pm
- March 1-12, 7:00 am to 5:00 pm
- March 13-31, 7:00 am to 5:00 pm
- April, 7:00 am to 7:00 pm
- May-Labor Day, 7:00 am to 8:30 pm
- September, 7:00 am to 7:30 pm
- October, 7:00 am to 6:30 pm
- November, 7:00 am to 5:00 pm
- December, 7:30 am to 5:00 pm

Rotary Poor House Park

Location

Rotary Poorhouse Park 704 Poorhouse Rd. Tappahannock, Va. 22560

Drive Time: Richmond 60 minutes, Gloucester 60 minutes, Fredericksburg 75 minutes

Directions:

Direction from Richmond, Va. – Go to Mechanicsville and get on US-360 East. Continue on US-360 E for 34.7 miles. Turn left onto State Route 619 (Kino Road) go 1.7 miles and the park entrance will be on your left turn on to Poor House Road (State Route 704).

Directions from Gloucester County Va. – Follow US-17 North for 43.5 miles, merge onto US-360 West/ Richmond Hwy via the ramp on the left (to Richmond) and go 1.8 miles, turn right onto State Route 619 (Kino Road), go 1.7 miles the park entrance will be on your left, turn on to Poor House Road (State Route 704).

Directions from Fredericksburg, Va. – Follow US -17 South for 49.5 miles merge onto US-360 West/ Richmond Hwy via the ramp on the right (to Richmond) and go 1.8 miles, turn right onto State Route 619 (Kino Road), go 1.7 miles the park entrance will be on your left, turn on to Poor House Road (State Route 704).

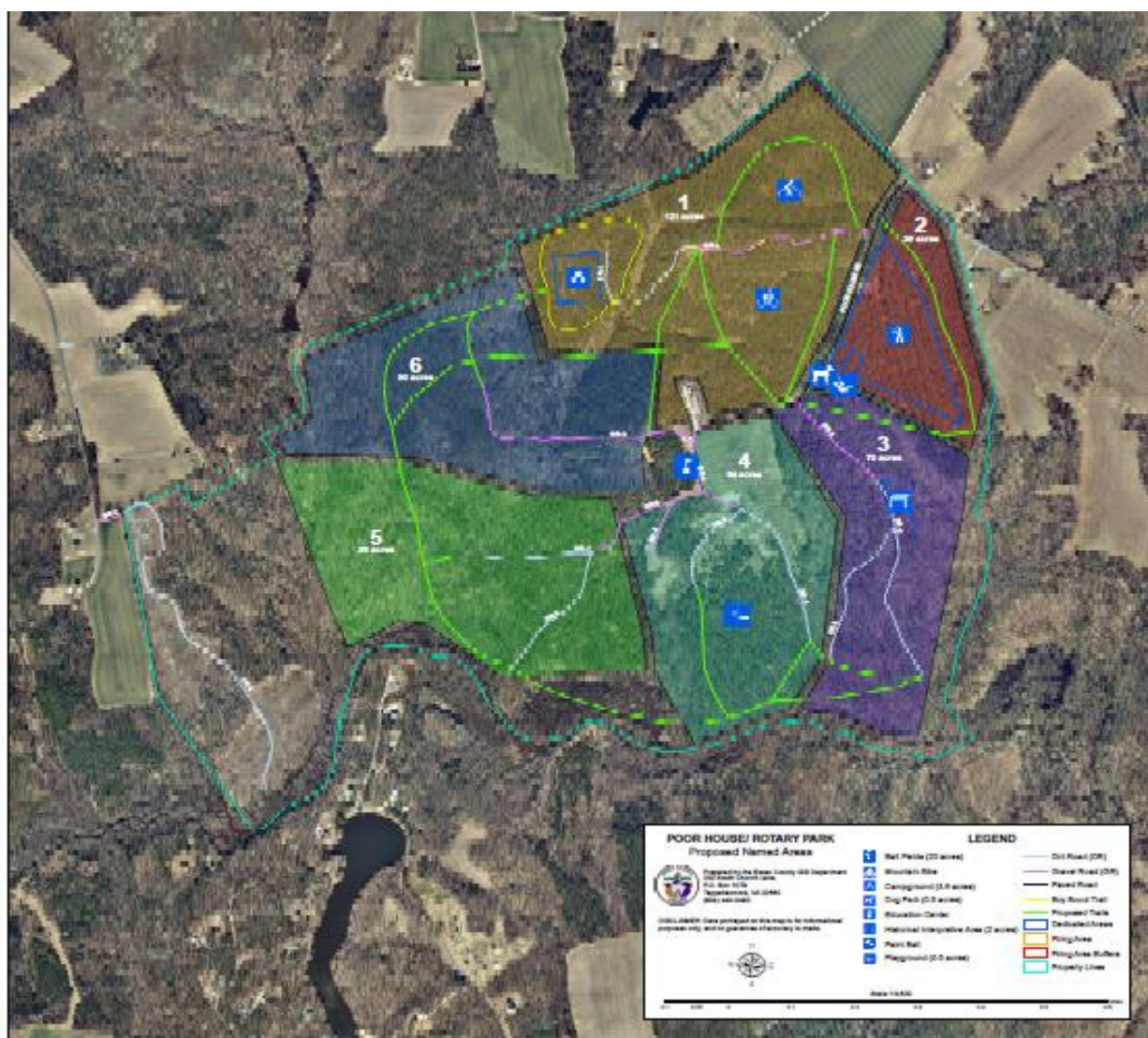
Directions from Charlottesville, Va. – Take I – 64 East for 55.8 Miles, Take exit 177 For Interstate 295 toward Airport/Washington/Norfolk and go 1.0 miles, continue onto I-295 South for 13.7 miles take exit 38A for State Route 627 East (Pole Green Road) go .2 miles then merge onto Meadowbridge Road (Pole Green Road), continue on Pole Green for 6.4 miles, Turn Left onto US-360 East for 28.2 miles, turn Left onto State Route 619 (Kino Road) go 1.7 miles the park entrance will be on your left, turn on to Poor House Road (State Route 704).

Park Size

700 acres.

Rotary Poorhouse Park

The park is divided into six areas. Area one proposed uses include multi-use trails, interpretative education, picnicking, and overnight camping by special permit (scouting). Area two proposed uses include athletic fields, playground, multi-use trails, interpretative education, nature education, and a dog park. Area three proposed uses include multi-use trails, interpretative education, and historical education. Area four proposed uses include multi-use trails, interpretative education, historical education and a dedicate paint ball range. Area five proposed uses include multi-use trails and interpretative education. Area six proposed uses include multi-use trails and interpretative education. All proposed areas will include a trail header map with the name of the trail. Trail information to provide terrain features, picnic areas, highlights along the trail, length, and approximate completion time. Concessions will be provided by a vendor.



General Park Rules and Regulations

We want your visit with us to be as relaxing and trouble-free as possible. Before you arrive, please become familiar with these few simple facts about Essex County Parks. Observe the rules and regulations while visiting Rotary Poorhouse Park.



Parking: All visitors must park in assigned parking areas.

Natural surroundings: Help preserve your park. Please do not cut or scar any plants or trees. Collecting any animal or plant is strictly prohibited except by permit from Richmond state parks headquarters or as allowed by the park during environmental education programming. Practice Leave No Trace Principles Remember, take only pictures and leave only footprints. And refrain from feeding wild animals.

Litter and garbage are unsightly and attract and injure animals. Please use the trash dumpsters if available or pack all trash out in our trash-free parks. The releasing of balloons is not allowed. Decorative balloons must be deflated and disposed of as trash.

May I bring alcoholic beverages? Essex County Policy prohibits alcohol on county property except by special permit.

Smoking is prohibited in all public buildings and within 25 feet of their entrances. It is also prohibited in all Park facilities.

Trails: Help prevent trail erosion. Walk along designated trails only. Mountain bikes are permitted only on roads and bike trails, not hiking trails. Our trails will take you to the most scenic areas of your park. Please don't create your own trail.

Fireworks: Fireworks are prohibited.

Fishing: Not permitted at Rotary Poor House Park.

Speed Limits: Interior park roads are generally posted at 25 mph or lower. Helmets are required when operating motorcycles.

Metal detectors: Metal detectors are not permitted at Rotary Poor House Park.

Drones and other aircraft: Drones, other unmanned aerial vehicles including remote control aircraft, and aircraft in general cannot be flown at Rotary Poor House Park. Pursuant to 4VAC5-30-400.

Research and collecting: Individuals, educational institutions and research agencies must have a completed and approved [Research and Collecting Permit](#) (PDF) to research and collect at Rotary Poorhouse Park. Essex County does not typically require the permit for unobtrusive observation, but some designated park areas restrict these activities to protect sensitive resources.

Hunting: Hunting is illegal at Rotary Poor House Park.

Pets at Rotary Poor House Park

One of the great things about Rotary Poor House Park is that you can bring your four-legged loved ones along as well. Fido can come too but, of course, there are limits.

Pets are allowed at Rotary Poor House Park. Park regulations require pets to be confined or kept on a leash and kept under supervision while in the park. Pets are allowed to be unleashed in the designated Dog Park. Pets are also not allowed in public facilities (restrooms, visitor centers, park offices, etc.)

Unfortunately, some pets and their owners don't always consider other guests. Pet owners must clean up after their pets. If a pet is left unattended, becomes a nuisance in violation of the leash law, disturbs others or damages a park facility, the owner's stay may be terminated. The owner will be billed for any damage to park facilities caused by pets.

Service animals are not subject to these restrictions and are welcome in all facilities.

Accessibility in Rotary Poor House Park



Rotary Poor House Park strives to make the park as barrier-free as possible for the convenience of those with limited mobility. Facilities continue to be upgraded for everyone's safety and enjoyment.

The park page on www.essexcountyrec.com has information on the availability of facilities for people with disabilities.

These trails offer the public opportunities to experience and enjoy the parks flora, fauna, cultural resources and scenic beauty. Hiking, hunting, wildlife watching, bicycling and horseback riding are proven contributors to good physical health and mental well-being – part of a healthy lifestyle that reduces illness, obesity and anxiety for all.

Trails are opened to wheelchairs, including manual and power wheelchairs, personal mobility assistive scooters and certain other similar devices designed primarily to assist people with disabilities. Users are encouraged to use caution when selecting trails, as many were designed for foot traffic only. Terrain might make them unsuitable for personal mobility devices.

Multi-use Trail

- Horseback Riding, Mountain Biking or Hiking
- There are miles of trails along Piscataway Creek and in beautiful woodlands.
- No Fee.
- Trail log sign-in required.
- Main park entrances.

Hiking Trail

- Hikers only
- To avoid the horses and bikes, there is a one way hiking trail.
- No Fee.
- Trail log sign-in required.
- Main Entrance.

Nature Trail

- Hikers only with interpretive areas and brochure about the flora and fauna of Rotary Poor house Park.
- Enjoy the beauty and the seclusion of the forest.
- No Fee.
- Trail log sign-in required.
- Main Entrance

Geocaching/letterboxing

- Rotary Poorhouse Park is a Geocaching site.
- Interested in setting up a site, use this [form](#) (31KB) to apply.
- Click here for a [current map](#) (103KB).
- Trail mileage is marked every 1/2 mile

Rotary Visitor and Education Center

Area 4

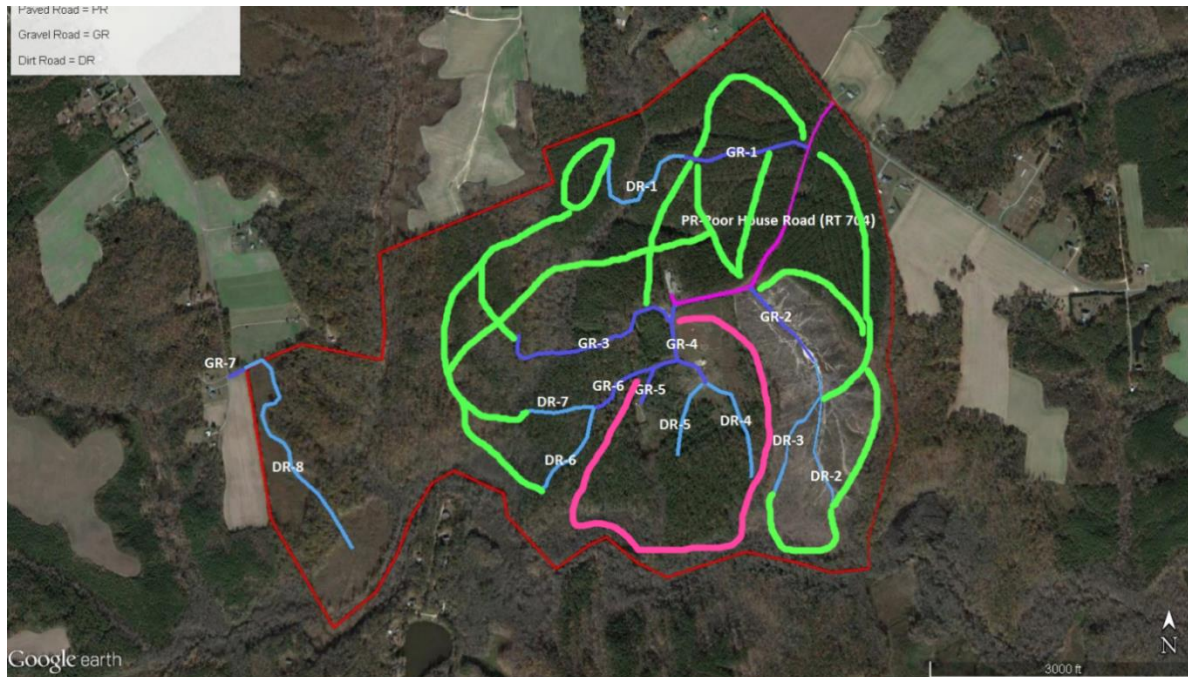


Rotary Visitor and Education Center will be a multi-use facility where visitors can find information about the park. The center will host educational and civic organizations. The center will have offices, storage, meeting rooms, and handicapped accessible restroom facilities.

Near the Education Center will be an outdoor seating area when groups and organizations can hold events. This area will also be used as a picnic area.



Trails Area 1, 2, 3, 5, 6



It's no wonder hiking is among the most popular activities in our parks. Its low impact, inexpensive, keeps you fit, strengthens bones and keeps the pounds off. It works the entire body and the mind by reducing stress and improving sleep quality. Escape the crowds, breathe fresh air, enjoy wildlife and take in the stunning scenery that our park provides.

Park trails accommodate other activities including biking, mountain biking and horseback riding, and many parks have universally accessible trails. Learn about Rotary Poor House Park trails by visiting the park page and finding "Trails" under the "Recreation" menu item at the left of the page, and links to a trail guide.



Biking Area 1, 2, 3, 5, 6

Biking is as fun as it is good for you. It increases cardiovascular fitness, balance, strength and stamina. It's a great stress reliever, especially in the great outdoors while you're breathing clean, fresh, country air. You can get to places on a bike, especially a mountain bike, where cars can't go. Biking also helps the environment; Bikers are efficient and cause no pollution.



Horseback Riding Area 1, 2, 3, 5, 6



A positive trail experience requires cooperation, understanding and courtesy by all trail users. In general, all users should yield to horseback riders and bicyclists should yield to all users. If you encounter a horse on a park trail, be sure to make yourself visible and keep calm--sudden movements can startle a horse. Allow the animal to be on the uphill side of you and the trail, where it may feel safer. Something unfamiliar from above a horse may trigger fear of a predator. Be alert from instructions from the equestrian and speak to the horse in a normal tone, which identifies you as a human.



Picnicking Area 1, 2, 3, 5, 6



Who doesn't love eating in the great outdoors? Parks are great places for it. Whether you're looking to have a picnic for two or for a large group, there's something to fit the bill.

Park picnic shelters may be rented half days. Some have grills. Shelters are reserved on a first-come, first-served basis by reservation on

www.essexcountyrec.com.

Some picnic areas will have charcoal grilles available for cooking. While will be covered. The type of picnic design will be determined by location.



Playground Area 2



Parks are giant playgrounds for your family. Parks offer fun playgrounds for children to climb, slide, swing, and explore. The playground will include colorful slides, swings, activity panels, elevated walkways, ladders and other obstacles to challenge your child and provide hours of outdoor fun.



Playground are designed for parks to provide for low maintenance and handicapped accessible.

Multi-Use Fields Area 2



Two regulation size athletic fields for recreational use including Little League baseball and softball.

Multi-use fields can be used for many different activities. Examples include Frisbee, disk golf, sports practices, and special events. Multi-use fields provide limitless opportunities for families to experience wide open spaces for activities of their choice. In the future, little league baseball and softball fields can be constructed where the children of Essex County could participate on fields comparable to the field surrounding counties currently use.

Dog Park Area 2



A fenced area separated for small and large dogs. This area is dedicated as a no leash area within the park.

Dog parks offer the only opportunity for some people to let their pets off a leash. A dog park offers a safe, secure area for pet exercise and a chance to introduce pet owners and their pets to other owners and pets in a safe and secure area.



Nature and History Programs Area 3



Poor House Cabin



Programs and exhibits teach guests about those who shaped our culture and how our world works. Essex County and the Middle Peninsula are steeped in history. The Historic Poor House where the park is located offers a unique opportunity to share the history with visitors. The Nature center can provide an opportunity for visitors to learn about a working forest, animals that live and travel through the park, and the importance of understanding the connection between man and nature.

They also:

- Reveal the deeper meaning of our resources.
- Impart new skills.
- Put people in touch with nature and hands-on history.
- Provide a chance to see Essex County through the eyes of those who shaped our land, culture and nation.



Mountain Biking Area 1



This area within area one is dedicated to separate special mountain biking trails. These trails will allow for different levels of experience and ability.

Beginner trail to gain experience and confidence.



Paint Ball Area 4

A dedicated 10 acre are within area four to host individual, groups, and business for recreation and team building activities. This is a contracted service through Essex County. Please see the description of activities and all requirements located on (vendor web site).



Volunteer Opportunities



Parks need volunteers to help run the parks and manage their natural resources. Volunteers staff contact stations and visitor centers, conduct environmental education programs, beautify the parks, develop and maintain trails, help visitors find what they need and make nearby communities' more aware of park offerings and activities. These are serious duties and responsibilities, so committed volunteers must be willing and able to reliably carry them out.

New volunteers in training



Operations and Maintenance

Staffing: The Park will be staffed by volunteers and Parks and Recreation part-time staff as needed. Staffing will be adjusted according to month, events, and attendance.

Security: Security monitoring will be provided by Park part-time staff and volunteers. The Essex County Sheriff's office will be called if staff are unable to resolve the problem.

Grounds Maintenance: Park staff and volunteers will be responsible for routine trash. Unusual situation will be handled through County Facilities. Park staff will be responsible for lawn care.

Trail Maintenance: Park staff and volunteers will be responsible for routine trail maintenance. Unusual situation will be handled through County Facilities.

Budget

Staff: Parks and Recreation will provide staffing from budget line 07200-1001. Volunteer staff will provide additional services.

Park Development: Rotary Poor House Park will be built in phases. Phases will be determined by forestry operations, volunteers, civic donations, vendors, grants, and revenue generated at the Park through special events/fund raisers. Request made to the BOS will be to provide matching funds only.

Rotary Poor House Park Partners

Rotary Poor House Park hopes to partner with the Garden Club of the Middle Peninsula, Northern Neck Master Gardeners, Essex County Public Schools, Essex County Public Library, St. Margaret's, and Aylett Country Day School, Friends of the Rappahannock, Essex Countryside Alliance, Economic Development, Chamber of Commerce, Realtors, local businesses and many others to promote the value of outdoor recreation in Essex County.

Summary

Essex County owns +/- 700 acres that have never been used except for forestry operations. There is currently a trash disposal station and sheriff's shooting range on the site. In 2015 public hunting was added to the park. The Essex County Parks and Recreation Advisory Commission has surveyed the community and received overwhelming support for a county park. It has been proven Parks generate revenue while providing county residents and visitors with the third leg of community development. Rotary Poorhouse Park can provide a much needed opportunity that has never existed before by becoming a recreation destination that will benefit lodging, retail, and food services and quality of life in Essex County.